

THE  
*Devon*  
Valley  
HOTEL

CONFERENCE  
RATES & PACKAGES



∞ 2023 - 2024 ∞

Devon Valley Road, Devon Valley, Stellenbosch  
P.O. Box 68, Stellenbosch, South Africa, 7599

Tel: +27 21 865 2012

info@devonvalleyhotel.com  
www.devonvalleyhotel.com



EXPERIENCE THE FINEST OF HANDMADE HOSPITALITY IN THE HEART OF THE STELLENBOSCH WINELANDS. WE OFFER A VARIETY OF OPTIONS AND FACILITIES TO ENSURE A MEMORABLE EXPERIENCE.

## THE DEVON VALLEY HOTEL

Devon Valley Hotel is located on a tranquil country setting with breathtaking views over our own vineyards. There are five conference venues that are fully air-conditioned and are configurable to almost any seating requirement.

## DAY CONFERENCE PACKAGE

Our Day Conference Package is R670.00 per person per day. This package includes the following:

- Coffee and tea served with rusks on arrival
- Mid-morning coffee and tea served with savoury eats
- Two-course lunch served with fresh fruit juice
- Afternoon coffee and tea served with mini cake stand
- Mineral water; sweets; notepaper and pens on the table

Half day DCP including lunch: R590 per person

*All dietary requirements should be arranged prior to the conference. Lunch and dinner menus are as per the chef's choice, unless alternative arrangements are made with our catering team. Requests over and above the standard menu prices, including requests for Halaal and Kosher catering, warrant an applicable surcharge.*

## SERVICES

The banqueting team, supported by the hotel's food and beverage team, is experienced in handling conferences and functions efficiently and creatively.

## STANDARD CONFERENCE EQUIPMENT

Includes: Data projector, white screen and flip chart.

All other conference equipment can be arranged through our audio visual company at an additional cost. Wireless Internet connectivity in the conference venues is available free of charge.





## SYLVANVALE

### WINE TASTING

The Devon Valley Hotel is situated on a working vineyard and offers wine tasting.

### DEVON VALLEY SURROUNDS

Unique tasting experiences are offered at renowned Wine Estates in Devon Valley. Boutique vineyards such as Middelvlei, Clos Malverne, Aaldering and SylvanVale, and the world-renowned sparkling wine at the House of J.C. le Roux, plus Stellenbosch's craft beer brewery, Stellenbrau.

Devon Valley is one of Stellenbosch's best-kept secrets. It meanders scenically through farmlands and vineyards, leading you to some of the finest wine, craft beer and Méthode Cap Classique tastings as well as culinary experiences the Winelands has to offer.

### FOOD & WINE PAIRING

Enjoy one of our decadent pairing options, where each course is paired with wines. Pairing will be presented with a tutorial.

### SINGLE MALT WHISKY TASTING

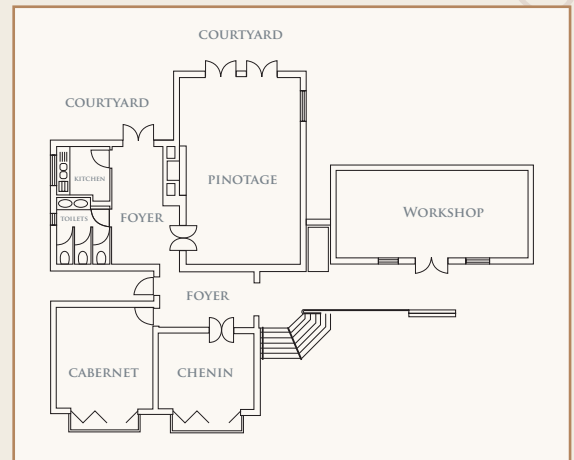
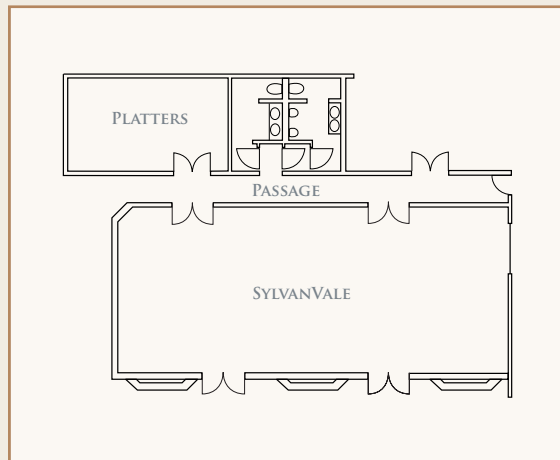
The hotel's Cedarwood Lounge & Bar is home to one of the most definitive collections of Single Malt Whiskies in South Africa. Now offering perfectly paired Single Malt Whiskies with world-class eats to bring you an incredible taste experience.

## TEAM BUILDING

Contact us for more information on team building activities, hosted by [corporateactivities.co.za](http://corporateactivities.co.za)

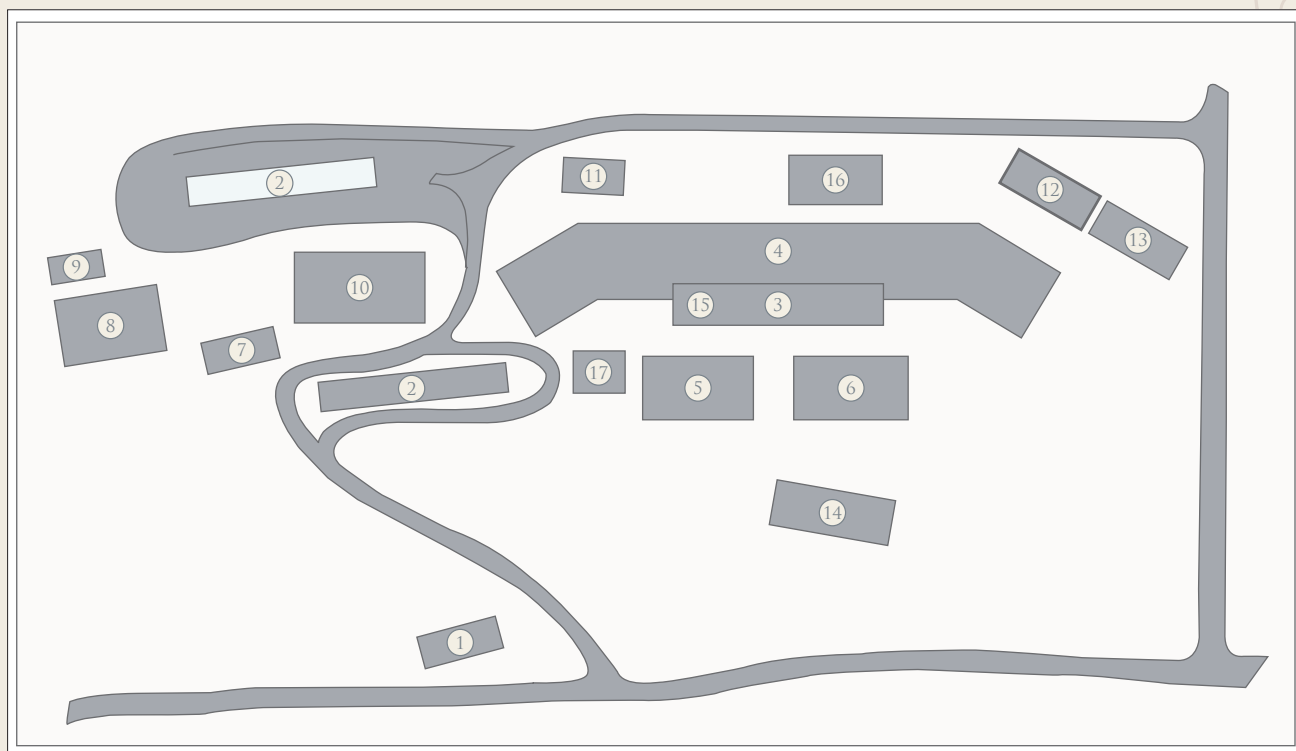
The corporate activities include:

- Corporate entertainment
- Indoor and outdoor team building activities
- Year-end/annual functions
- Office ice breakers and fun days
- Family days & sports days



	CABERNET	CHENIN	PINOTAGE	SYLVANVALE	THE WORKSHOP
<b>SEATING CAPACITIES</b>					
U-shape	9	0	21	35	26
School room	12	0	24	70	36
Cinema	18	0	40	110	50
Banquet	0	0	0	100	30
Boardroom	9	0	0	40	24
Boardrooms	-	8	-	-	-
Half moon rounds	-	-	-	40	-
<b>DIMENSIONS (M)</b>					
Length	4.8	4.8	9	14.8	12
Width	5	3.8	5.5	7.4	6
Height	0	0	0	3.1	0
Area (m <sup>2</sup> )	24	18.2	49.5	117.74	72
<b>LIGHTING FACILITIES</b>					
Controls	Y	Y	Y	Y	Y
Dimmers	Y	Y	Y	Y	Y
Windows	Y	Y	Y	Y	Y
Blackout	Y	Y	Y	Y	Y
<i>POWER</i> Sockets	2	2	4	7	6
<i>DOOR</i> Height	2.1	2.2	2	2.03	2.04
Width	0.81	1.22	1.25	1.6	1.61
<i>SCREENS</i> Height	1.85	0	2	2.2	1.8
Width	1.8	0	2	2.1	1.8

## PROPERTY LAYOUT OF THE DEVON VALLEY HOTEL



- |                       |                       |                         |
|-----------------------|-----------------------|-------------------------|
| 1. Security           | 7. Gift Shop          | 13. Vineyard Rooms      |
| 2. Parking            | 8. Manor House        | 14. Main Pool           |
| 3. Reception          | 9. Pool               | 15. Flavours Restaurant |
| 4. Main Building      | 10. Conference Center | 16. Laundry             |
| 5. Restaurant Terrace | 11. Courtyard Rooms   | 17. Bus Stop            |
| 6. Vineyard Terrace   | 12. Vineyard Rooms    |                         |

## DIRECTIONS FROM THE AIRPORT VIA THE N2

- From the Airport, take the N2 in the direction of Somerset West.
- Take Exit Number 33 off the N2 (signposted Baden Powell Drive & Stellenbosch).
- Continue along the R310 from approximately 10km in the direction of Stellenbosch, passing by Spier Wine Estate on your right.
- You will reach a T-junction. Neethlingshof Wine Estate's tall water fountain can be seen to your left. Turn right onto the R306/M12 in the direction of Stellenbosch.
- Continue along for another 1.5km and you will pass the Cape Saw Mills on your left-hand side.
- Turn left into the Devon Valley Rd, immediately after you passed the Cape Saw Mills. You will pass a small industrial area on your left.
- Continue on for about 6km on the Devon Valley Rd and you will reach the hotel's main entrance on your right.

